

# P80

Rugged Tablets

## Accessories Guide



### STD. Spec.

#### Adapter



PWR-P80-5V2A-CN



PWR-P80-5V2A-EU



PWR-P80-5V2A-UK



PWR-P80-5V2A-US

Adapter(CN/EU/UK/US), I/P: 100-240V, O/P: 5V2A, use with DC-BK-TypeC cable

#### USB Cable



**DC-BK-TypeC**  
1.0 meter Type-C cable

#### Sim Tray Ejector



**SIM-TRAY-EJECTOR**  
SIM tray ejector

#### Hand Strap



**SG-P80-HDSTP**  
Hand Strap

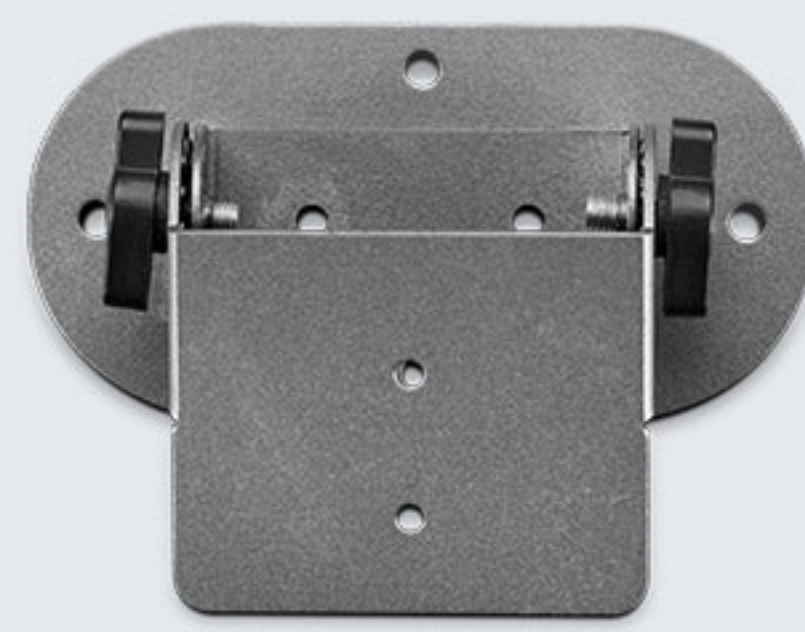
### Optional

#### Rugged Rubber Boot



**RB-P80-RR**  
Rugged Rubber Boot, omni-directional protected, can be installed with standard VESA holder with interface- FDMI MIS-C, and vehicle-mounted bracket MOT-P80 that need to be purchased separately.

#### Holder



**MOT-P80**  
Holder, 110\*50\*40\*1.5

#### Pistol Grip



**TRG-P80-PG**  
P80 Pistol grip, read UHF tag and barcode scanning like pressing the trigger.

#### Charging Cradles & Adapters



**CRD-P80-RBC**  
Charging Cradle for device, use with DCPWR-12V2A-XX adapter. The cradle cup has an insert that is fixed by 4 pcs screws and they must be removed in prior when charging P80 with rugged boot.



**CRD-P80-INS**  
Insert for P80 cradle cup. 4 pcs M2\*6.0 screws are necessary.



**DCPWR-12V2A-XX**  
Adapter(CN/EU/UK/US/IND), I/P: 100-240V, O/P: 12V2A, DC

